



PRO



# HIGH-WEAR RESISTANCE POLYESTER COATED STEEL WITH SMOOTH SURFACE



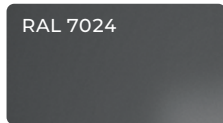
The polyester coating offers advanced properties, including enhanced abrasion resistance. This is achieved through the use of the Extreme series paint material.

## COATING BENEFITS

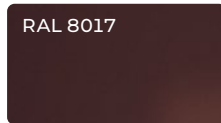
- Advanced resistance to external impacts, such as:**
  - Aggressive environments
  - Hail, rockfall, and sand storms
  - Processing into final products
- Advanced resistance to friction between coil laps during transportation and storage**

2.5×  
ABRASION  
RESISTANCE

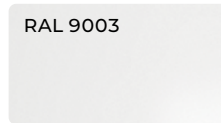
## MASTERED COLOR PALETTE



Graphite gray



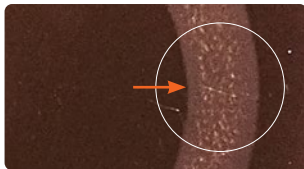
Chocolate brown



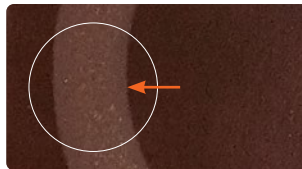
Signal white

New colors can be mastered upon request

## PABRASION TEST RESULTS<sup>1</sup>



Standard polyester



Wear-resistant polyester

Weight loss of the wear resistant coating is 2.5 times lower than the one of the polyester base<sup>2</sup> coating

<sup>1</sup> Taber Abrasion test evaluates paint coating resistance to wear under rotational abrasive action (ability of material to resist abrasive loads and abrasive action)

<sup>2</sup> Tested against standard polyester coating

## APPLICATIONS



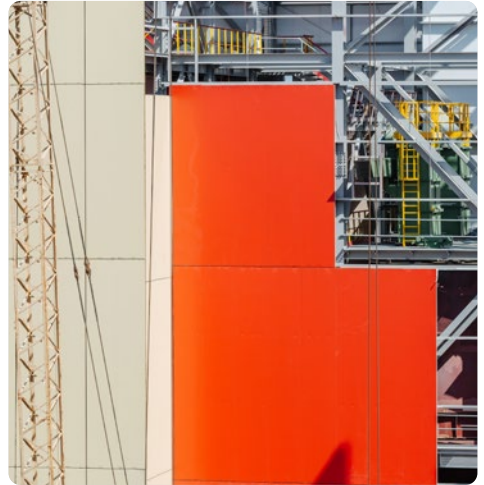
- Trucks



- Roof (metal tile, corrugated sheet)



- Fencing structures



- Sandwich panels

## CONTACT DETAILS

[sales@nlmk.com](mailto:sales@nlmk.com)

+7 800 511 30 39

